

DAL SIN INDUSTRIES, INC.

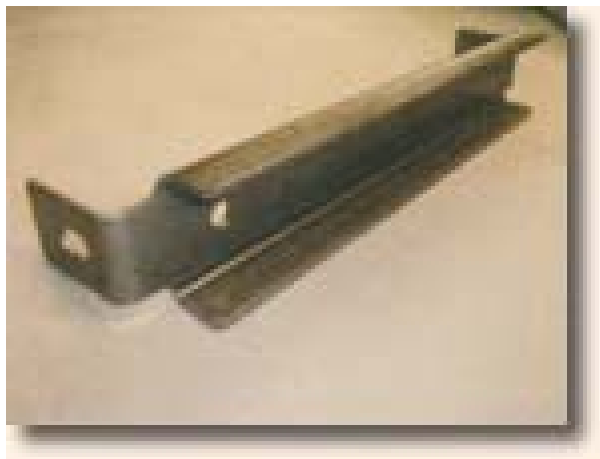
Process Capability: Stamping

Products that require shearing, punching, and bending may be reduced to one operation with our 250-ton Minster Mechanical Power Press.

- Minster 250-ton Mechanical Press
- 48" x 96" bed size
- 22" wide x 115" long feed
- Punching and bending progressive die possibilities
- Up to 1/4" thick material
- Tolerances +/- .003
- Up to 100 hits per minute



Minster 250-Ton Press

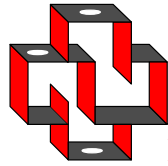


.188" thick stamped part



Stamped 12 Gauge Campfire Ring

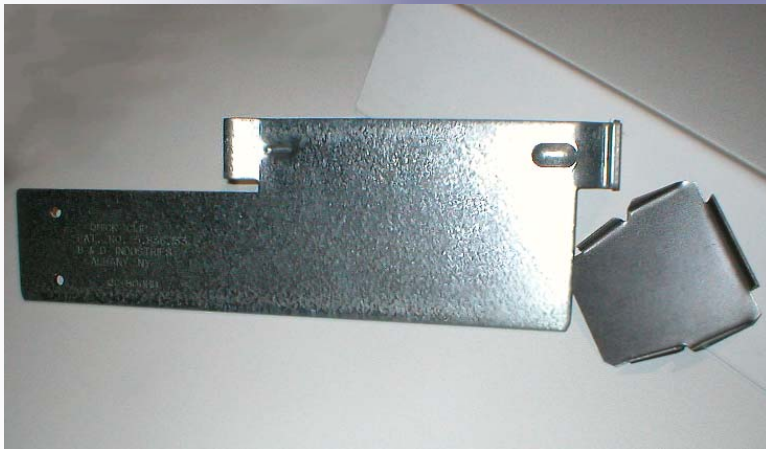
DAL SIN INDUSTRIES, INC
9111 Grand Avenue South
Bloomington, MN 55420
Phone: 952-881-2260
Fax: 952-881-2841
www.dalsinind.com



DALSIN INDUSTRIES, INC.

Minster Product Capability

- Construction Industry parts
- Heavy gauge steel parts
- Farm implement parts
- Formed seat backs for outdoor furniture
- Our Dalsin Campfire Ring



DALSIN INDUSTRIES, INC
9111 Grand Avenue South
Bloomington, MN 55420
Phone: 952-881-2260
Fax: 952-881-2841
www.dalsinind.com